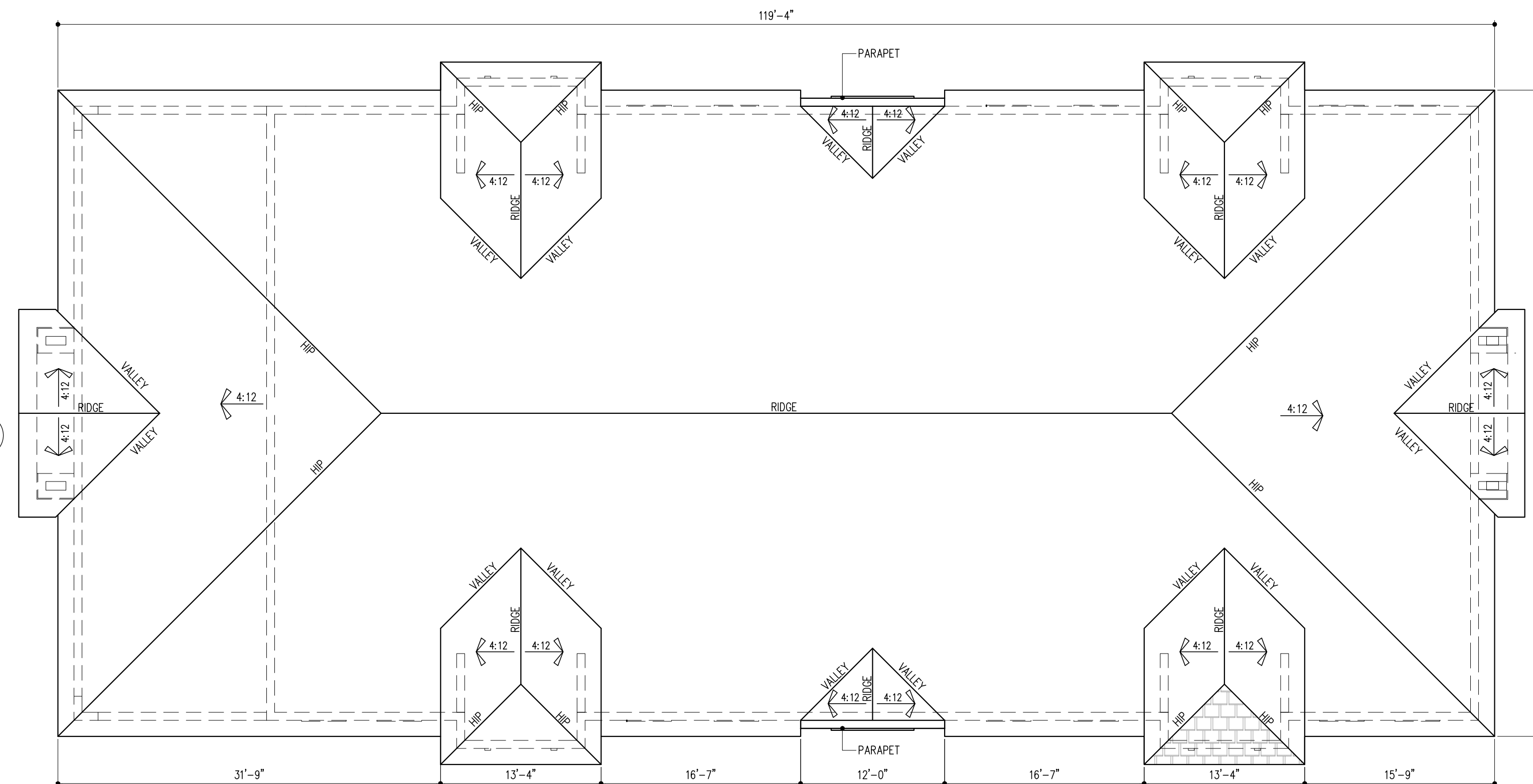


FLOOR PLAN

SCALE: 1/8"=1'-0"



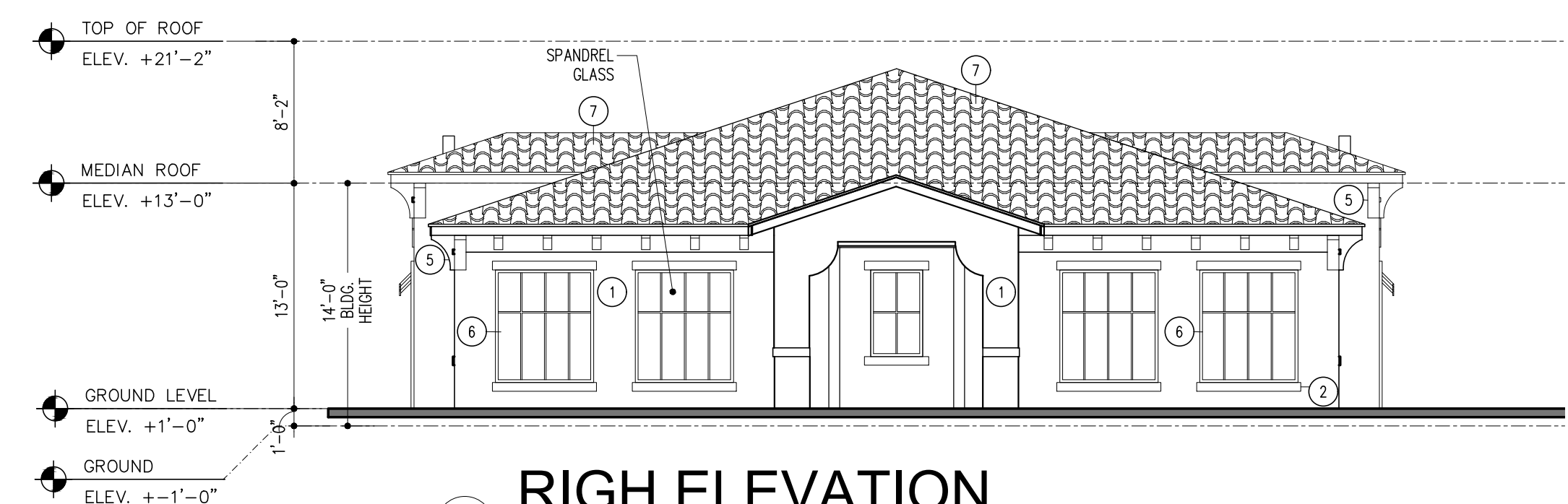
ROOF PLAN

SCALE: 1/8"=1'-0"



FRONT ELEVATION

SCALE: 1/8"=1'-0"



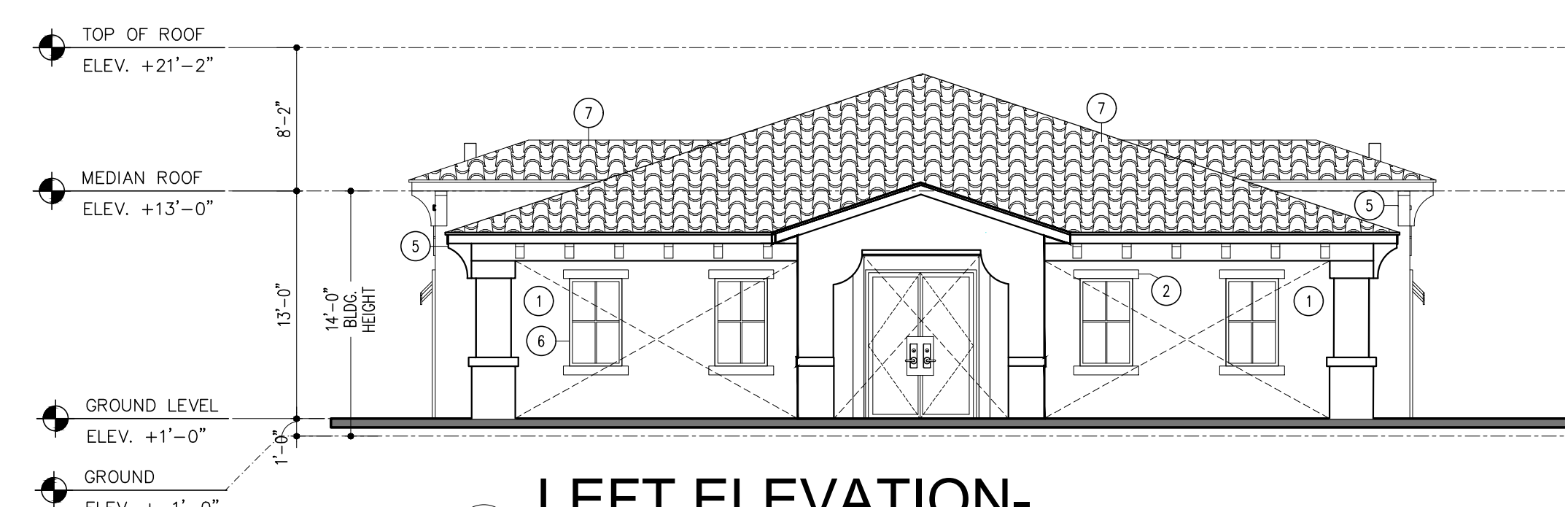
RIGHT ELEVATION

SCALE: 1/8"=1'-0"



REAR ELEVATION

SCALE: 1/8"=1'-0"



LEFT ELEVATION-

SCALE: 1/8"=1'-0"

AAC

PZ23-12000017

03/05/2025



GOLF MAINTENANCE FACILITY

SCALE: 1/8"=1'-0"

MSA ARCHITECTS, INC.
AAC000895

8950 SW 74th COURT
SUITE 1513
MIAMI, FLORIDA 33156
(305) 273-9911



JOSE I. SAUMELL
AR0013085

OAKS@PALM AIRE

MORGUARD
LOCATED AT:
POMPANO BEACH, FLORIDA

MSA
ARCHITECTS
ARCHITECTURE & PLANNING

© 2022 MSA ARCHITECTS, INC.
COPYRIGHT © 2022 MSA ARCHITECTS, INC. THE ARCHITECTURAL DESIGN AND DETAIL DRAWINGS FOR THIS BUILDING AND/OR OVERALL PROJECT ARE THE PROPERTY OF MSA ARCHITECTS, INC. AND ARE NOT TO BE REPRODUCED OR TRANSMITTED IN ANY FORM OR BY ANY MEANS, ELECTRONIC OR MECHANICAL, WITHOUT THE WRITTEN PERMISSION OF MSA ARCHITECTS, INC.

MSA ARCHITECTS, INC.
AAC000895

8950 SW 74th COURT
SUITE 1513
DADE CITY, FL 33516
(505) 273-9911

DRAWN	
CONTRACT DATE	10/12/22
SCALE	AS SHOWN
JOB NO.	2181.PRJ
SHEET TITLE:	
GOLF MAINTENANCE FACILITY	
FLOOR PLAN-ELEVATIONS	
SHEET NUMBER:	
GMF-2.1	

PRE-APP MEETING 04/04/2023	
ORC SUBMITTAL 06/13/2023	
ORC RE-SUBMITTAL 08/16/2023	
ORC RE-SUBMITTAL 01/01/2024	
ORC RE-SUBMITTAL 10/16/2024	
ORC RE-SUBMITTAL 12/10/2024	
ORC RE-SUBMITTAL 01/29/2025	